

THE CIRCLES STUDY



Community Resources:
WASHINGTON COUNTY



EMERGENCY SERVICES: 
FIRE -AMBULANCE - POLICE 9-1-1



NON-EMERGENCY SERVICES 3 - 1 - 1

REASONS TO CALL:

- Property Crimes no longer in progress
- Abandoned autos/ potholes
- Illegally parked vehicles, vehicles blocking driveways
- Metropolitan Police Department Phone numbers and Addresses
- All other city services such as Public Works, Motor Vehicles, Human Services, and the Mayor's Office
- Trash pick-up problems
- City agency phone numbers, addresses and hours of operations

NATIONAL CRISIS HOTLINES

National Domestic Violence Hotline:
(800) 799-SAFE (7233)

National Child Abuse Hotline:
(800) 4-A-CHILD or (800) 422-4453

Community Care Behavioral Health Crisis Hotline:
(800) 553-7499

Substance Abuse and Mental Health Services Administration (SAMHSA) Treatment Helpline:
(800) 662-HELP (4357)

Suicide Prevention Hotline:
(800) 237-TALK (8255)

Crisis Text Line: 741-741

PA Coalition Against Rape Crisis Hotline:
1 (888) 772-7227

LEGAL SERVICES

Washington County Office of Victim Services

(724) 229-5922
One South Main Street, Rm 10 (Lower Level),
Washington, PA 15301

Southwestern PA Legal Services, Inc.

(724) 225-6170
101 West Cherry Avenue,
Washington, PA 15301

Disability Rights Network of PA (DRN)

(412) 391-5225
429 Fourth Ave, Suite 701,
Pittsburgh, PA 15219-1505

EMERGENCY ASSISTANCE PROGRAMS

American Red Cross: Washington County

430 Johnson Road,
Washington, PA 15301

BASIC NEEDS: FOOD & SHELTER

HOMELESSNESS HOTLINE:

(800) 972-6990



National Hotline to assist in finding you eligible services in a housing crisis

WASHINGTON COUNTY DEPARTMENT OF HUMAN SERVICES

> **STARTER RESOURCE THAT PROVIDES INFORMATION, REFERRALS, AND CASE MANAGEMENT TO THOSE EFFECTED BY HOMELESSNESS**

<https://www.washingtoncountyhumanservices.com>

(724) 228-6995
100 West Beau Street, Suite 703,
Washington, PA 15301

WASHINGTON CITY MISSION

> **GENDER AND FAMILY SPECIFIC SHELTERS, FOOD PANTRY, AND NO COST MEDICAL CARE**

724-222-8530

Food Pantry: 84 West Wheeling Street,
Washington, PA 15301

Community Kitchen: 56 West Strawberry
Avenue, Washington, PA 15301



WASHINGTON COUNTY ASSISTANCE OFFICE

> **FOOD, HEAT, HEALTH CARE, AND COST OF CHILD/LIVING ASSISTANCE**

Main Line: (724) 223-4300
Toll Free: 1-(800) 835-9720

167 North Main Street, PO Box 5004,
Washington, PA 15301

WASHINGTON CHRISTIAN OUTREACH

> **SPECIAL PROGRAMS FOR PROVIDING FOOD/ SUPPLIES AROUND HOLIDAYS & BACK-TO-SCHOOL**

(724) 222-0750
119 Highland Avenue, Washington, PA
15301

GREATER WASHINGTON COUNTY FOOD BANK

> **DISTRIBUTES FOOD TO LOCAL RESIDENTS OF SPECIFIC APARTMENT BUILDINGS IN WASHINGTON COUNTY**

<https://www.gwcfb.org/food-pantry-locations>

724-632-2190

BASIC NEEDS: FOOD & SHELTER

HOMELESSNESS HOTLINE:

(800) 972-6990

National Hotline to assist in finding you eligible services in a housing crisis



COMMUNITY CIRCLE FOOD PANTRY

**Greater Pittsburgh Area Food Banks*

(724) 225-1540
69 East Pine Street,
Washington Pennsylvania 15301

THE SALVATION ARMY - WASHINGTON CORPS

**Greater Pittsburgh Area Food Banks*

(724) 225-5740
60 East Maiden Street,
Washington, PA 15301

MEADOWLANDS FOOD PANTRY

**Greater Pittsburgh Area Food Banks*

(724) 222-1911
300 Pike Street,
Meadowlands, Pennsylvania 15347

LEMOYNE COMMUNITY CENTER FOOD PANTRY

**Greater Pittsburgh Area Food Banks*

(724) 228-0260
200 Forrest Avenue,
Washington Pennsylvania 15301

CANONSBURG AREA FOOD PANTRY

**Greater Pittsburgh Area Food Banks*

(724) 993-2270
112 West Pike Street,
Canonsburg, Pennsylvania 15317

BLUEPRINTS - WASHINGTON MAIN OFFICE

> RENT AND UTILITY ASSISTANCE

724-225-9550
150 W. Beau Street, Suite 304,
Washington, PA 15301

SPHS - CONNECT INC.

> EMERGENCY, TRANSITIONAL, AND PERMANENT SUPPORTIVE HOUSING. PLUS LIFE SKILLS AND SUPPORT SERVICES

Washington Office:
(724) 229-3387
75 East Maiden Street, Ste. 203,
Washington, PA 15301

Washington Family Shelter:
724-229-4306
100 Highland Avenue,
Washington, PA 15301

Westmoreland Permanent Supportive Housing:
724-489-8095, ext. 4435
300 Chamber Plaza,
Charleroi, PA 15022

FAMILY & PARENTING SERVICES

PARENTING AND HEALTH CARE EMERGENCY RESOURCES

Bridgeville Health Center

412-257-9880
533 Washington Pike Suite
203,
Bridgeville, PA 15017

SUPPORT FOR FAMILIES EFFECTED BY DISABILITY

Autistic Connection of PA

www.autismofpa.org
(412) 781-4116
711 Bingham Street,
Pittsburgh, PA 15203

The PA Elks Home Service Program

www.paelkshomeservice.org
(412) 997-2734
703 Georgian Place,
Somerset, PA 15501

Poison Control:

(800) 222-1222



Prenatal Services:

(800) 311-BABY (2229)

MOM-BABY Hotline:

(877) 672-7368

Centers for Disease Control (CDC):

(800) CDC-INFO or (800) 232-4636

Pennsylvania Department of Public Welfare ChildLine:

Local # : (412) 473-2000
Toll Free #: 1-800-932-0313

Pennsylvania Healthy Baby

Helpline: (800) 986-BABY (2229)

Pennsylvania Children's Health Helpline:

(800) 986-KIDS (5437)

Family Resources Parenting WARMLINE

Main #: (412) 641-4546
Local #: 1 (800) 641-4546

FAMILY & PARENTING SERVICES

BLUEPRINTS

<https://myblueprints.org>

724-225-9550

150 W. Beau Street, Suite 304, Washington, PA 15301

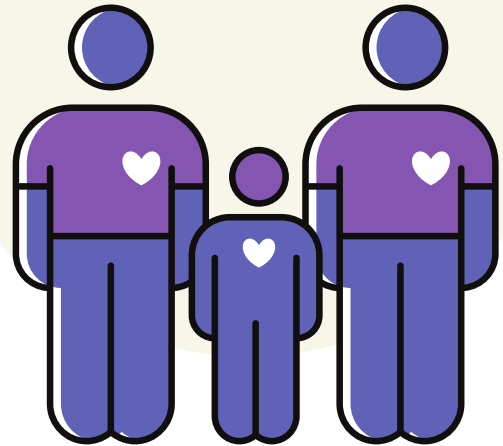
Adult Education Services: Classes in digital/ financial literacy and help with career development

Children's Education Services: Head start, early head start, and pre-k, along with after-school programs.

Housing Resources: Rental assistance and resources for home-owners in financial crisis.

Women, Infants, & Children (WIC) Program: Nutritional/ Breastfeeding support for women who are pregnant, postpartum, or currently breastfeeding and their children.

LOCAL FAMILY-BASED RESOURCES



THE CHILDREN'S INSTITUTE

www.amazingkids.org

(412) 420 2400

1405 Shady Avenue, Pittsburgh, PA 15217-1350

Infant Empowerment Program: Intensive program for parents who are expecting or currently have a child under 3 and need support to remain an intact family unit.

In Home Family Services: For families with children under 18 who are struggling to remain an intact family unit.

CATHOLIC CHARITIES

www.ccpgh.org

(724) 228-7722

331 South Main Street, Washington, PA 15301

Online Counseling: Individual, couple, and family "Tele-Counseling".

Group Counseling: Anger management workshops, along with groups for separated or divorced parents.

Utility Assistance: Help with heat, electricity, and water bills for residents within 200% of Poverty Guideline.

Pregnancy and Parenting Support Services: Counseling, pregnancy testing, life skills education, and help with essential care items

EMPLOYMENT SERVICES

POTENTIAL GAINS OF REACHING OUT

**Check individual websites for more details*

- Career counselors help with building job search skills in your current field or can help you build knowledge of a new career path.
 - Advice for creating resumes and practicing interview skills
 - Referrals to training and educational opportunities
- On-site recruitment, job fairs, and networking opportunities
- Job search advice for individuals with criminal backgrounds
- Learn important financial skills to help make the most of your money

WASHINGTON GREENE COUNTY JOB TRAINING AGENCY

<https://washingtongreene.org>

(724) 229 5083
351 West Beau Street, Suite 300,
Washington, PA 15301

BLUEPRINTS

<https://myblueprints.org>

724-225-9550
150 W. Beau Street, Suite 304,
Washington, PA 15301

OFFICE OF VOCATIONAL REHABILITATION

<https://www.dli.pa.gov/Individuals/Disability-Services/ovr/Pages/default.aspx>

(724) 223-4430
201 West Wheeling Street,
Washington, PA 15301

MENTAL HEALTH & COUNSELING

EMERGENCY CRISIS HOTLINES & SUPPORT GROUPS



RESOURCES FOR IMMEDIATE HELP



CRISIS CONTACT

COMMUNITY CARE BEHAVIORAL HEALTH (CCBH) CRISIS LINE

<https://members.ccbh.com/find-provider/provider-directory/>
(800) 553-7499

Crisis services and connections to mental health practitioners

SUICIDE PREVENTION HOTLINE:

(800) 237-TALK (8255)

CRISIS TEXTLINE:

Text "HOME" to 741741

WASHINGTON COUNTY CRISIS LINE:

1-877-225-3567

SUPPORT GROUPS

NATIONAL ALLIANCE FOR MENTAL ILLNESS (NAMI) SUPPORT GROUPS

In-Person Family Support Group

Contact: Jim Gleason
724-225-1607

e-mail: gleason07@comcast.net

MEETS AT:

100 West Beau Street, Washington PA, 15301

In-Person Peer Support Group:

Contact: Lisa Bails
(724) 288-3401

MEETS AT:

850 Beech St #2, Washington, PA 15301

Virtual Meetings

<https://www.namikeystonepa.org/support/support-groups/virtual-connection-group/>

MENTAL HEALTH & COUNSELING

GENERAL MENTAL HEALTH SERVICES

Facility Information	Adult Outpatient Services	Child Outpatient Services	Family or Group Therapy	Home-Based Care	Inpatient Services	Crisis Center
<p>SPHS BEHAVIORAL HEALTH</p> <p>https://www.sphs.org/index.html</p> <p>ENHANCED OUTPATIENT CENTER</p> <p>724-489-0320 250 Chamber Plaza, Charleroi, PA 15022</p>	✓				✓	
<p>THE CHILDREN'S INSTITUTE</p> <p><i>*Ages 5-21 Only</i></p> <p>www.amazingkids.org</p> <p>(412) 420 2400 1405 Shady Avenue, Pittsburgh, PA 15217-1350</p>		✓	✓	✓		
<p>MERAKEY</p> <p>www.Merakey.org</p> <p>(724) 942-4677 1075 Waterdam Plaza, McMurray, PA 15317</p>	✓	✓	✓	✓	✓	✓
<p>NAMI BASICS EDUCATION PROGRAM</p> <p>https://www.nami.org/Support-Education/Mental-Health-Education/NAMI-Basics</p> <p><i>Local: (412) 366-3788</i> <i>Toll Free: (888) 264-7972</i></p> <p>105 Braunlich Drive, McKnight Plaza, Suite 200, Pittsburgh, PA 15237</p>	✓	✓				

**Can coordinate with schools*

**Can coordinate with schools*

**Adult & Adolescent*

**Sessions Over the Phone*

**Sessions Over the Phone*

MENTAL HEALTH & COUNSELING

GENERAL MENTAL HEALTH SERVICES

Facility Information	Adult Outpatient Services	Child Outpatient Services	Family or Group Therapy	Home-Based Care	Inpatient Services	Crisis Center
<p>CATHOLIC CHARITIES</p> <p>www.ccpgh.org</p> <p>(724) 228-7722 331 South Main Street, Washington, PA 15301</p>	✓		✓			
<p>WASHINGTON COMMUNITIES HUMAN SERVICES</p> <p>http://www.washcomm.net</p> <p>((724) 225-6940 378 West Chestnut Street, Suite 205, Washington, PA 15301</p>	✓	<p>✓</p> <p>*Can coordinate with schools</p>	✓			
<p>CENTERVILLE CLINICS: WASHINGTON BEHAVIORAL HEALTH</p> <p>https://centervilleclinics.com</p> <p>(724-223-1067 37 Highland Avenue, Washington, PA 15301</p>	✓				<p>✓</p> <p>*Partial Hospitalization</p>	

GRIEF SUPPORT RESOURCES

ONLINE GRIEF RESOURCES:

GRIEVING.COM

Online chat groups facilitate group conversation about grief of losses of all kinds.

VITAS HEALTHCARE

<https://www.vitas.com/family-and-caregiver-support/grief-and-bereavement/remote-grief-support-groups>

Zoom and Phone-in Support Groups for a variety of grieving circumstances



LOCAL GRIEF SUPPORT GROUPS

LIFELINE OF LISTENING FRIENDS – SUICIDE LOSS & BEREAVEMENT GROUP

<http://mylifelinepittsburgh.org/index.html>

Contact Mary Broglie or Cathy Hramika
412-854-2179

Group Meets @
120 Abington Drive, Room #214,
McMurray, PA 15317

GRIEF SHARE

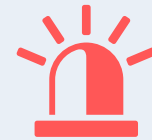
<https://www.griefshare.org>

Nation-wide organization whose mission is to facilitate support groups to those grieving a loved one. Multi-month program with weekly sessions and a variety of locations. Requires minimal to no payment. Check website for more information on times and locations.

ALCOHOL & SUBSTANCE USE SERVICES



RESOURCES FOR IMMEDIATE HELP



CRISIS CONTACT

SUBSTANCE ABUSE & MENTAL HEALTH SERVICES ADMINISTRATION (SAMHSA)

24/7 Hotline for Screenings and Immediate Treatment Referrals

1-800-662-HELP (4357)

RE-SOLVE CRISIS NETWORK HOTLINE & WALK-IN CENTER

24 Hour Information/ Referral Services & Walk-in Center

1-888-796-8226

333 North Braddock Avenue, Point Breeze,
PA 15208

WASHINGTON COUNTY CRISIS LINE:

1-877-225-3567

SUPPORT GROUPS

VIRTUAL ALCOHOLICS ANONYMOUS MEETINGS

AA Meetings Online & by Phone

<https://aa-intergroup.org/meetings>

VIRTUAL NARCOTICS ANONYMOUS MEETINGS

NA Meetings Online & by Phone

<https://virtual-na.org>

AL ANON & ALATEEN MEETINGS

For family members of alcoholics

**Visit website to find local meeting times and locations*

<https://al-anon.org>

ALCOHOL & SUBSTANCE USE SERVICES

Facility Information	Adult Outpatient Services	Family or Group Therapy	Residential Services	Walk-in Services	Medication Assisted Detox
<p>WASHINGTON DRUG & ALCOHOL COMMISSION</p> <p>https://www.butlercountypa.gov/430/Drug-Alcohol-Programs</p> <p>*Only Intake, Assessment, and Referral</p> <p>(724) 223-1181 90 West Chestnut Street, Suite 310, Washington, PA 15301</p>					
<p>ABSTINENT LIVING AT THE TURNING POINT</p> <p>www.abstinentliving.com</p> <p>(724) 228-2203 199 North Main Street, Washington, PA 15301</p>		✓	✓		
<p>SPHS BEHAVIORAL HEALTH : WASHINGTON COUNTY D&A OUPATIENT</p> <p>https://www.sphs.org/index.html</p> <p>724-228-2200 75 East Maiden Street, Washington, PA 15301</p>	✓				
<p>GREENBRIAR TREATMENT</p> <p>www.greenbriar.net</p> <p>1-(800) 637-4673 800 Manor Drive, Washington, PA 15301</p>			✓		✓
<p>SOUTHWEST BEHAVIORAL CARE INC.</p> <p>https://www.sphs.org/index.html</p> <p>(724) 489-0320 250 Chamber Plaza, Charleroi, PA 15022-1607</p>	✓		✓	✓	

DOMESTIC VIOLENCE RESOURCES

EMERGENCY HOTLINES



National Domestic Violence Hotline:

1-800-799-SAFE

National Sexual Assault Hotline

1-800-656-HOPE

Teen Dating Violence Hotline:

1-866-331-9474

or go to loveisrespect.org for chat
helpline

DOMESTIC VIOLENCE SERVICES OF SOUTHWESTERN PA

<https://www.peacefromdv.org>

24/7 Hotline:

Local - (724) 493-9500

Toll Free - (800) 791-4000

Administrative Office: (724) 223-5481

Legal Advocacy: (724) 562-7016

Services Offered:

24 Hour Hotline: Crisis counseling, requests for emergency shelter intake, and information about resources

Emergency Safe House: 24 hr intake and transportation, counseling and support groups, children's services, and food/clothing assistance.

Counseling: Offers individual counseling or community support groups to survivors

Legal Advocacy: Consultation with legal advocates (including Protection from Abuse orders)

Medical Advocacy: Accompaniment to medical appointments and specialized forensic assistance for victims of sexual assault.

RESOURCES FOR OLDER ADULTS

HOTLINE FOR REPORTING SUSPECTED ELDER ABUSE/NEGLECT

Allows for anonymous reporting of concerns regarding elder abuse/neglect 24/7.

PA: 1-(800) 490-8505

Washington County: 971-673-5200.



SOUTHWESTERN PA AREA AGENCY ON AGING

<https://www.swpa-aaa.org/index.php>
724-489-8080
305 Chamber Plaza,
Charleroi, PA 15022-1607

RESOURCES FOR OLDER ADULTS

Health Insurance Counseling and Care Management: Consultation with experts regarding insurance issues for older adults. Additionally provides support in care planning and implementation

Senior Community Centers: Referrals to local senior community centers that offer programs including daily activities, support groups, free/reduced lunches, etc.

Transportation Services: Help with acquiring transportation (public and private) for older adults

Senior Companion Programs: Matching seniors with companions for help with weekly activities (e.g., groceries) and companionship

In-Home Services: Provides home delivered meals. Additionally can provide someone to live in the home, match older adults with a caring family, or can help set up care in a nursing home.

Legal Services: Advice in legal areas of finance, guardianship, power-of-attorney, wills, etc.

RESOURCES FOR CAREGIVERS

Direct Services: Case management, training in caregiving skills, access to support groups, information on benefits and resources, assistance completing benefits and insurance forms.

Reimbursement Programs: Some reimbursements provided for out-of-pocket care supplies (e.g., nutritional supplements, incontinence supplies), hired help (e.g., personal care, meal preparation), and home modifications (e.g. grab bars, chair lifts)

RESOURCES FOR OLDER ADULTS

WASHINGTON COUNTY AGING SERVICES

<https://washingtoncountyhumanservices.com/agencies/aging-services>

(724) 228-6856

95 W. Beau Street, Suite 300,
Washington, PA 15301

Services Offered: Local senior centers, home delivered meals, and care management

KINCONNECTOR

<https://www.kinconnector.org>

1-866-546-2111

Resource Hub for Grandparents Raising Grandchildren

Assistance with finding Child Care, Food/Clothing, Financial or Legal Help, Health Insurance, Caregiving Skills, and Support Groups

LOCAL SENIOR CENTERS

More Information:

Visit: <https://washingtoncountyhumanservices.com/agencies/aging-services>



WASHINGTON SENIOR CENTER

(724) 222-8566

369 West Maiden Street, Washington, PA 15301

BURGETTSTOWN SENIOR CENTER

(724) 947-9524

931 Main Street, Bentleyville, PA 15314

CROSS CREEK SENIOR CENTER

(724) 587-5755

28 Clark Avenue, Avella, PA 15312

CENTER IN THE WOODS

(724) 938-3554

130 Woodland Court, Brownsville, PA 15417

CANONSBURG SENIOR CENTER

(724) 745-5443

30 East Pike Street,
Canonsburg, PA 15317

RIVERSIDE PLACE

(724) 483-5800

303 Chamber Plaza,
Charleroi, PA 15022

BETH CENTER SENIOR CENTER

(724) 377-0000

316 Station Street, Vestaburg, PA 15368

CLAYSVILLE/MCGUFFY SENIOR CENTER

(724) 663-4202

105 Green Street, Claysville, PA 15323

DONORA SENIOR CENTER

(724) 379-6446

683 Meldon Avenue,
Donora, PA 15033

BENTLEYVILLE SENIOR CENTER

(724) 239-5887

931 Main Street, Bentleyville, PA 15314

THOMAS CAMPBELL SENIOR CENTER

(724) 225-2290 or 228-2855

850 Beech Street,
Washington, PA 15301

MONONGAHELA SENIOR CENTER

(724) 258-9511

102 West Main Street,
Monongahela, PA 15063

MCDONALDS-CECIL SENIOR CENTER

(724) 743-1827

3599 Miller's Run Road, Cecil, PA 15321